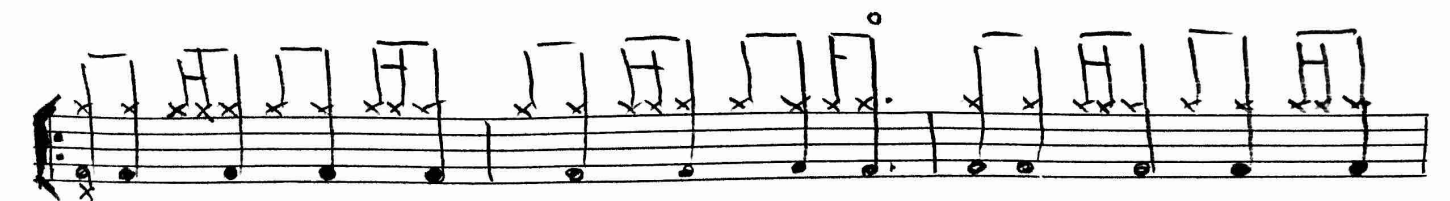
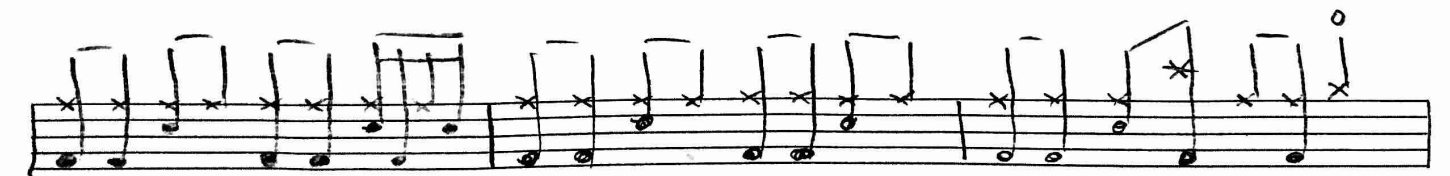
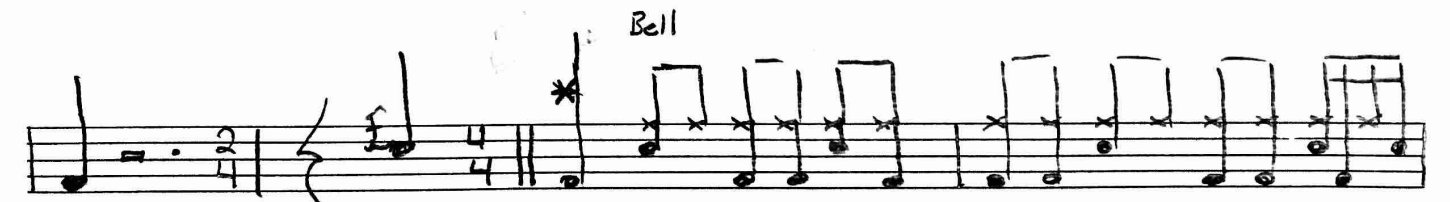
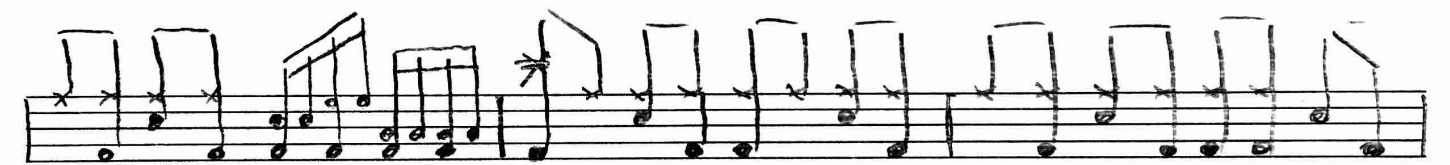
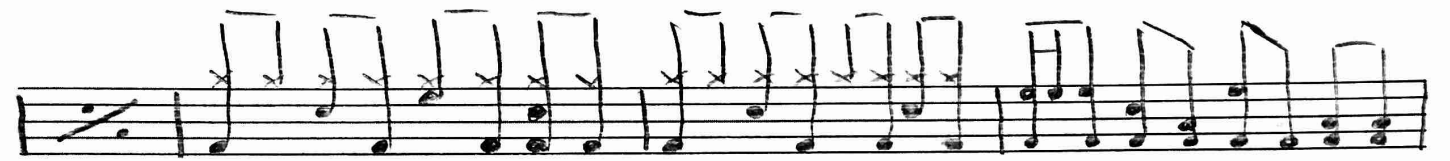
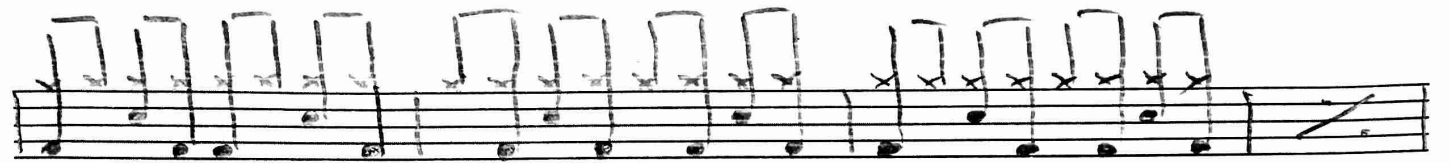
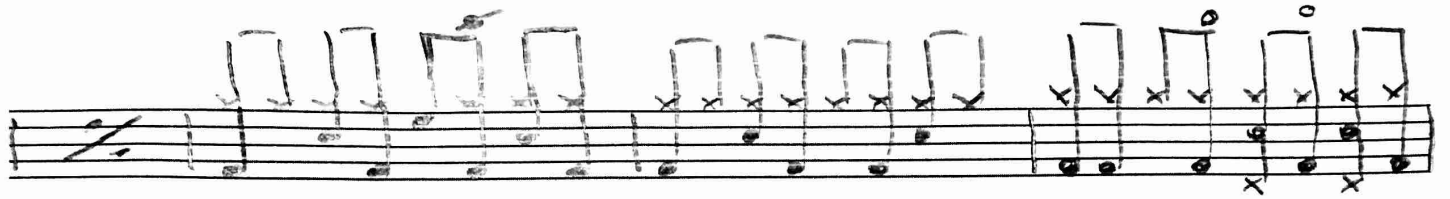
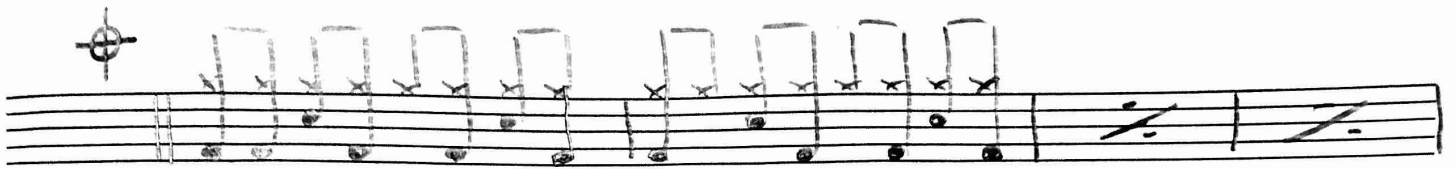


"Carry On Wayward Son" by Kansas





A page of handwritten musical notation consisting of ten staves. The notation is written in black ink on a white background. Each staff contains a sequence of notes, primarily eighth and sixteenth notes, with stems pointing upwards. Many notes have an 'x' written above them, likely indicating fretted notes on a guitar. There are also some notes with a 'v' above them, possibly indicating a vibrato or a specific articulation. The notation is somewhat sketchy and appears to be a working draft or a personal manuscript. The staves are connected by a single horizontal line at the top and bottom. The overall style is that of a handwritten musical score.



$\text{♩} = \text{♩}$

