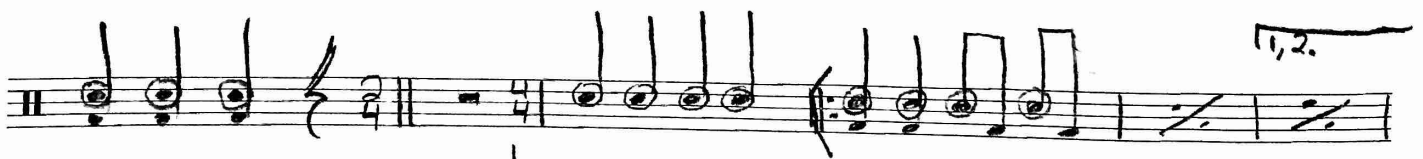
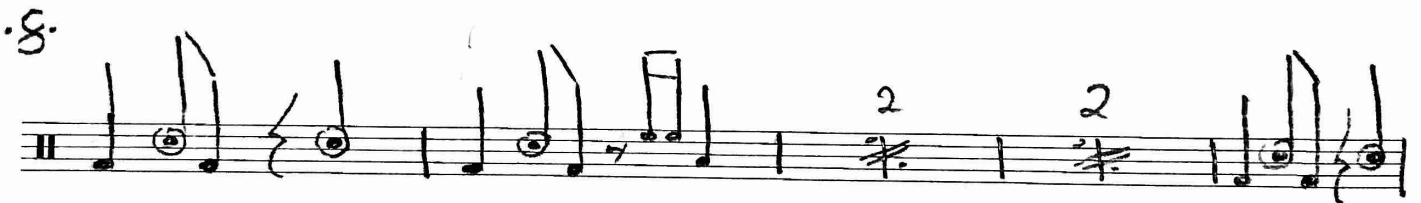
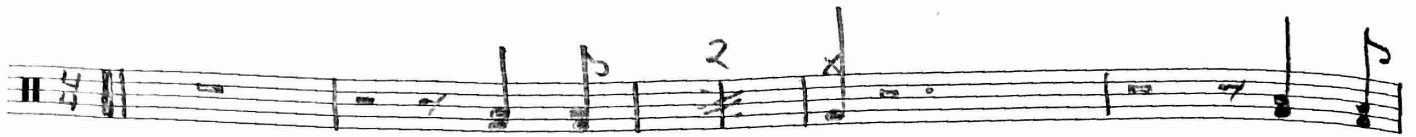
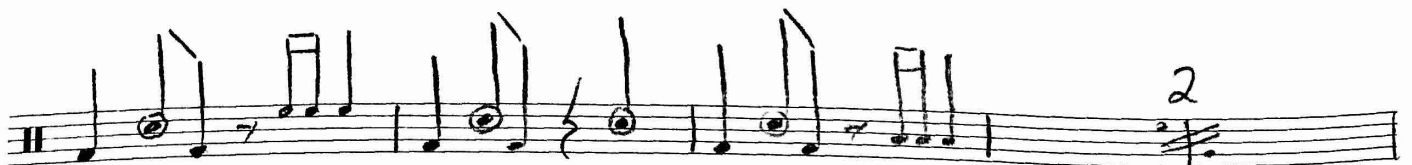
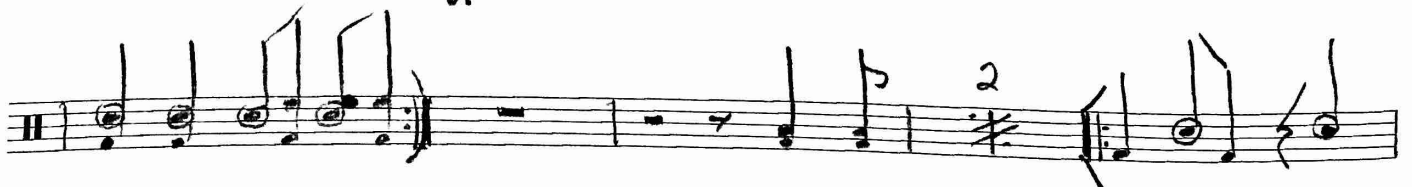


"Cold Cold Cold" by Cage the Elephant



TO CODA
3.



Handwritten musical notation on a single staff. It begins with a treble clef and a key signature of one sharp (F#). The notation includes a first ending bracket labeled "1." and a second ending bracket labeled "2.". The piece concludes with a double bar line, the instruction "DS", and "a coda".

Handwritten musical notation on a single staff. It starts with a treble clef and a key signature of one sharp. The notation includes a common time signature (C) and a section of the staff that is crossed out with diagonal lines.

Handwritten musical notation on a single staff. It begins with a treble clef and a key signature of one sharp. A second ending bracket labeled "2" is positioned above the first few notes of the staff.

Handwritten musical notation on a single staff. It starts with a treble clef and a key signature of one sharp. The notation includes a section of the staff that is crossed out with diagonal lines.

Handwritten musical notation on a single staff. It begins with a treble clef and a key signature of one sharp. The notation includes a section of the staff that is crossed out with diagonal lines, followed by two measures marked with a second ending bracket labeled "2".

Handwritten musical notation on a single staff. It starts with a treble clef and a key signature of one sharp. The notation includes a first ending bracket labeled "1." and a second ending bracket labeled "2.". There are also two measures marked with a second ending bracket labeled "2" at the end of the staff.

Two empty musical staves with treble clefs and key signatures of one sharp.

Two empty musical staves with treble clefs and key signatures of one sharp.