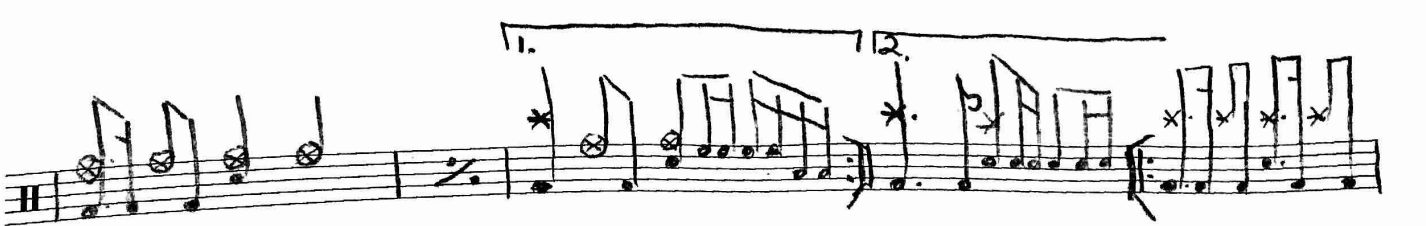
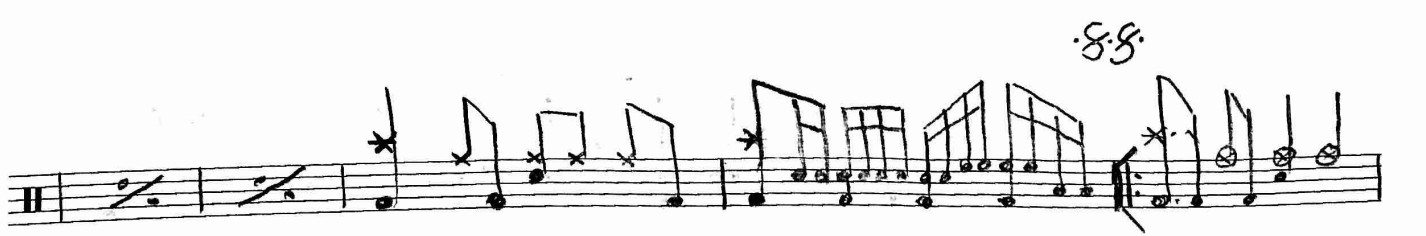
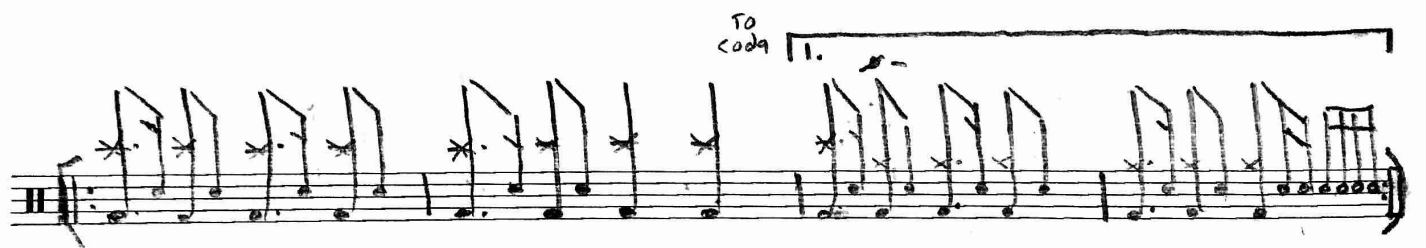
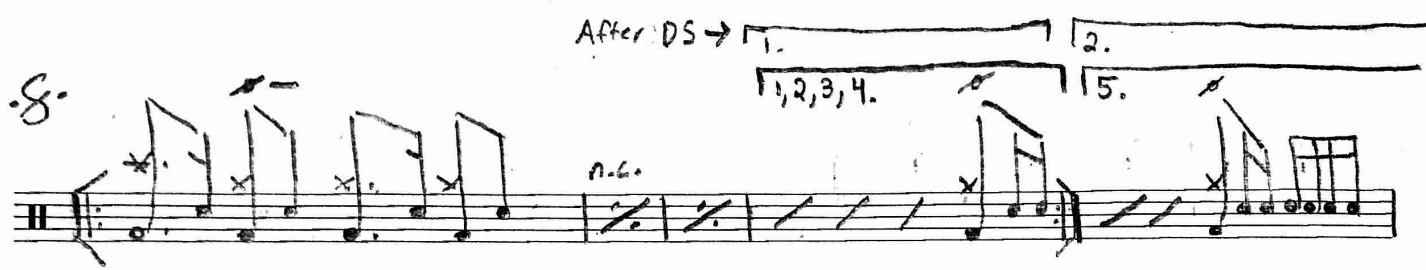


"Run"

116



Handwritten musical score for guitar, consisting of ten staves. The notation includes treble clefs, time signatures, notes, rests, and dynamic markings. Key annotations include:

- Staff 1: Rehearsal marks 1., 12., and 13.
- Staff 2: "To Coda 2" above the staff.
- Staff 6: "DSS at Coda 2" below the staff.
- Staff 8: "n.c." below the staff.
- Staff 9: Rehearsal marks 1. and 12.

Handwritten musical notation on a single staff. It begins with a treble clef and a key signature of one sharp (F#). The notation consists of a sequence of chords, each with an 'x' on the string line indicating a muted string. Accents are placed above several notes. The piece concludes with a double bar line.

Handwritten musical notation on a single staff. It starts with a treble clef and a key signature of one sharp. The notation features chords with '6' figures above them, indicating a sixth chord. The piece ends with a double bar line.

Handwritten musical notation on a single staff. It includes a treble clef and a key signature of one sharp. The notation features first and second endings, indicated by '1.' and '2.' above the staff. The piece concludes with a double bar line.

Handwritten musical notation on a single staff. It includes a treble clef and a key signature of one sharp. The notation features first and second endings, indicated by '1.' and '2.' above the staff. The piece concludes with a double bar line.

Handwritten musical notation on a single staff. It includes a treble clef and a key signature of one sharp. The notation features chords with 'x' marks and accents above the notes. The piece concludes with a double bar line.

Handwritten musical notation on a single staff. It includes a treble clef and a key signature of one sharp. The notation features first and second endings, indicated by '1.' and '2.' above the staff, and '6' figures above the chords. The piece concludes with a double bar line.

Handwritten musical notation on a single staff. It includes a treble clef and a key signature of one sharp. The notation features a first ending, indicated by '1.' above the staff, and a diamond symbol at the end of the piece. The piece concludes with a double bar line.

An empty musical staff with a treble clef, positioned at the bottom of the page.