

Shepherd of Fire

(P) (R) L (R)

1 e t a 2

no crash 2 * 2 2 * no crash

* no crash

(1) +

-8-

2.

1 + 2 + 3 + a 4 e +

To coda

Handwritten musical notation on a single staff, featuring a series of eighth notes with stems pointing down and 'x' marks above them, indicating a specific rhythmic pattern.

Handwritten musical notation on a single staff, similar to the first staff, with eighth notes and stems pointing down, and 'x' marks above them.

Handwritten musical notation on a single staff, showing a double bar line followed by the text "ps al coda".

(1) +a 2c+a 3c+a 4c +

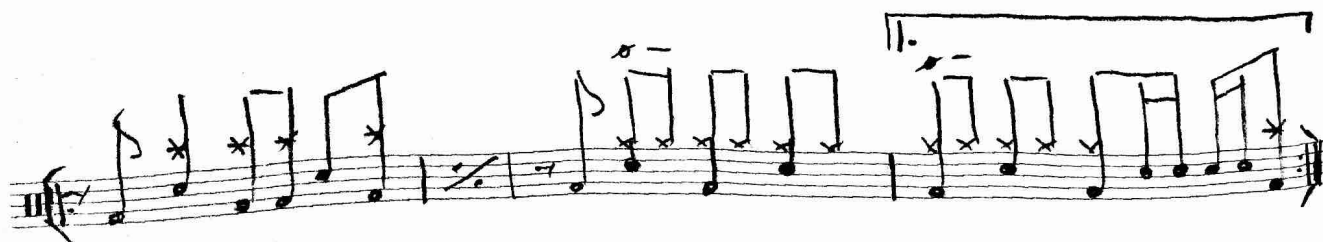
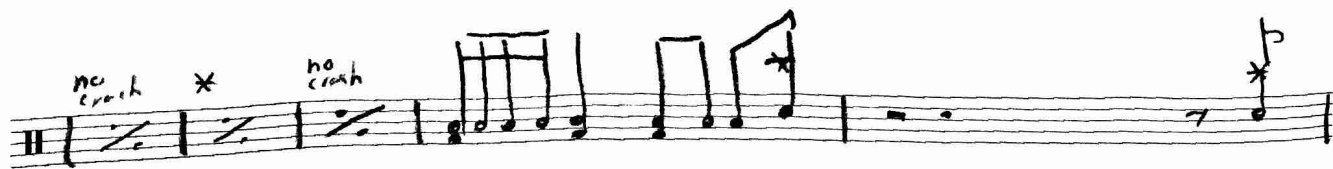
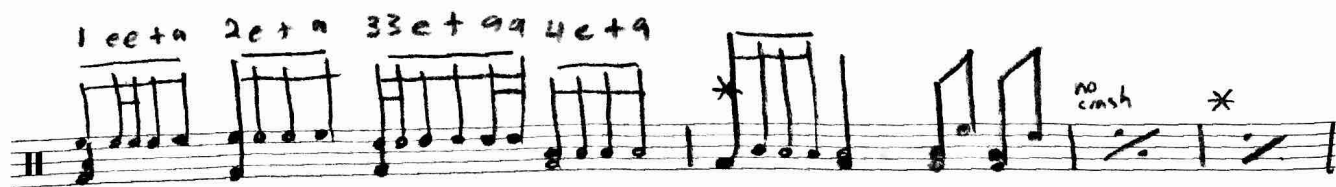
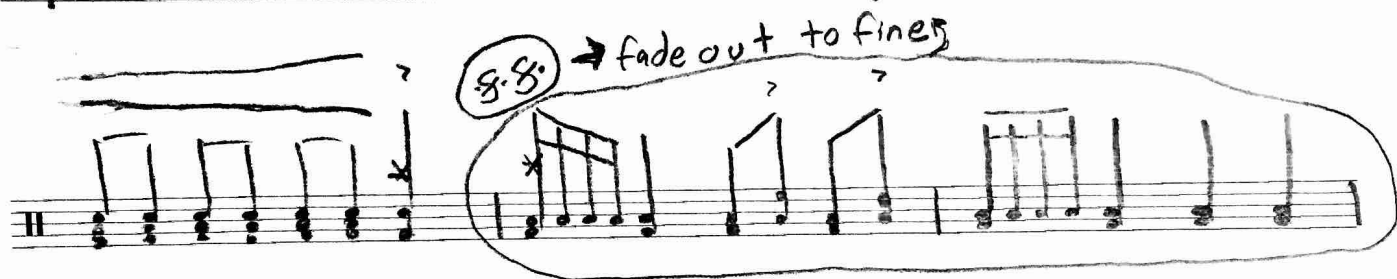
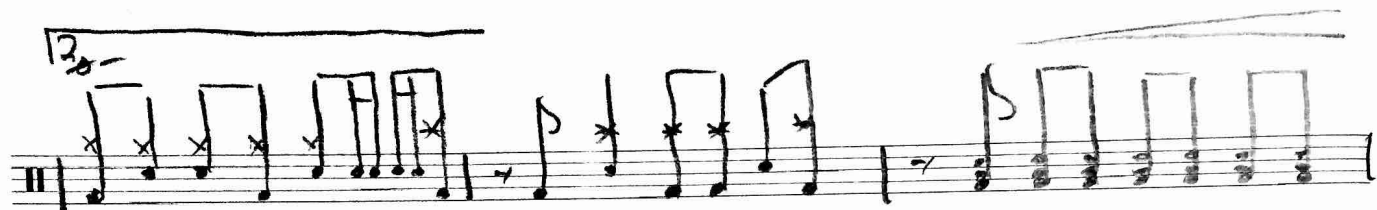
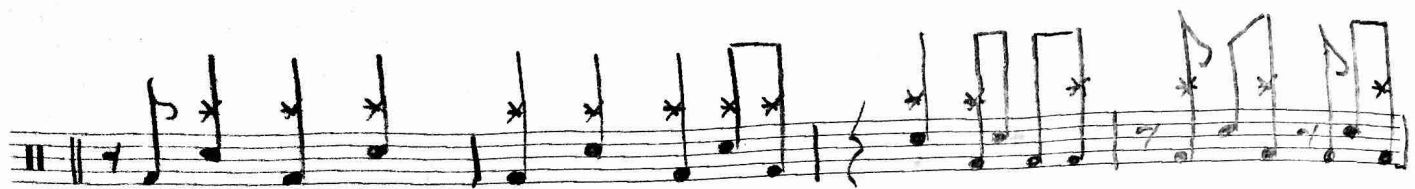
Handwritten musical notation on a single staff, starting with a circled "1" and the sequence of notes "+a 2c+a 3c+a 4c +". The notes are eighth notes with stems pointing down and "x" marks above them.

Handwritten musical notation on a single staff, showing a first ending bracket labeled "1." and a second ending bracket labeled "2.".

Handwritten musical notation on a single staff, continuing the rhythmic pattern of eighth notes with stems pointing down and "x" marks above them.

Handwritten musical notation on a single staff, continuing the rhythmic pattern of eighth notes with stems pointing down and "x" marks above them.

Handwritten musical notation on a single staff, continuing the rhythmic pattern of eighth notes with stems pointing down and "x" marks above them.



2. 13.