

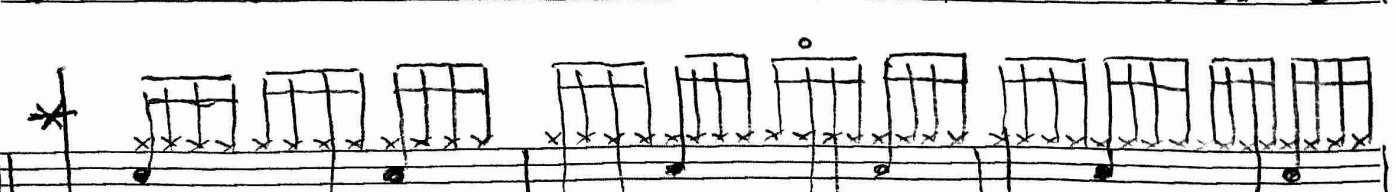
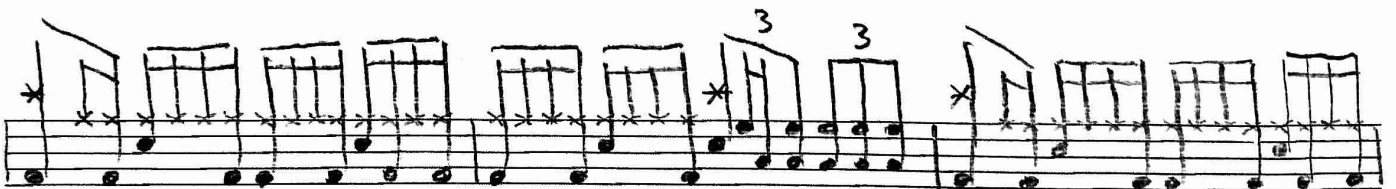
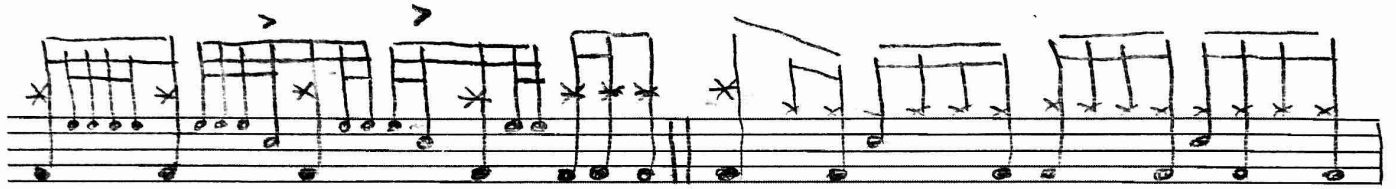
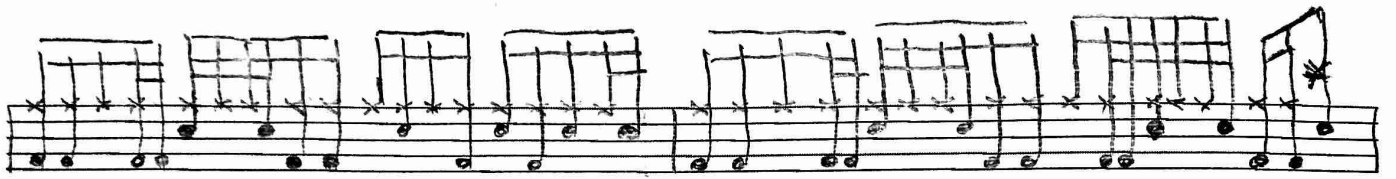
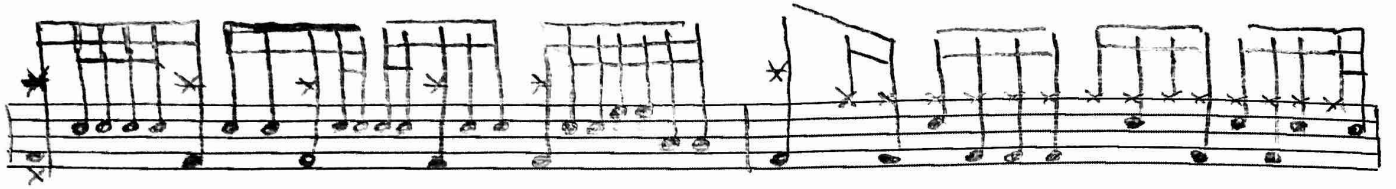
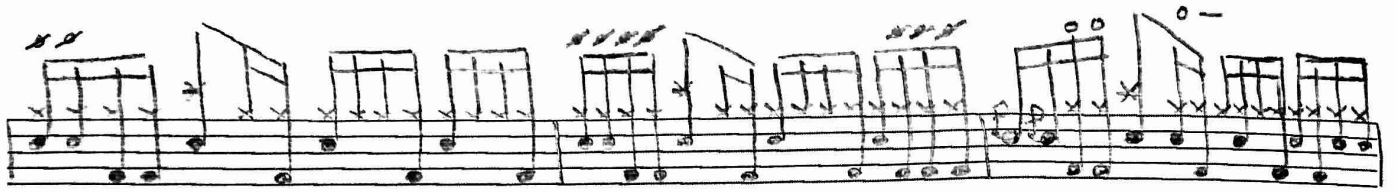
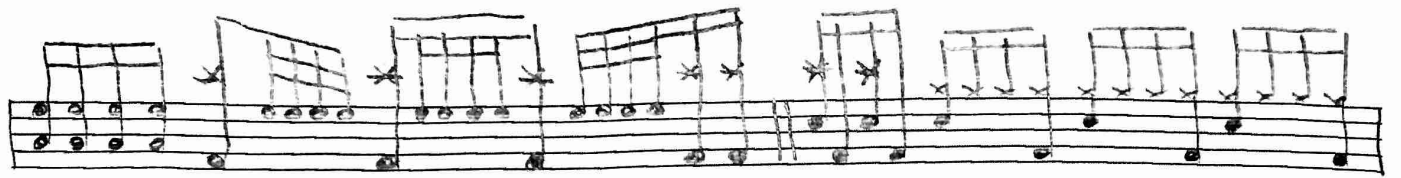
"Tom Sawyer"

A handwritten musical score for guitar, consisting of ten staves. The notation is written in black ink on a white background. Each staff begins with a treble clef and a key signature of one sharp (F#). The music is written in a rhythmic style characteristic of early rock and roll, featuring a consistent eighth-note bass line and a melody of eighth-note chords. The chords are often beamed together in groups of four or six notes. The score includes various musical notations such as asterisks (likely indicating barre positions), slurs, and dynamic markings like 'f' (forte) and 'mf' (mezzo-forte). The piece concludes with a double bar line and a final chord.



Handwritten musical score for guitar, consisting of ten staves. The notation includes chords, melodic lines, and various performance markings such as 'n.c.', '2', '1.', and '12'. The score is written in a single system across ten staves.





D

fade out...

